



TECHNICAL SERVICE BULLETIN

Power Liftgate Opens And/Or Closes Uncommanded While In PARK

19-2162
23 May 2019

Model:

| |
|-------------------------------------|
| Ford 2018-2019 Expedition |
|-------------------------------------|

Issue: Some 2018-2019 Expedition vehicles may exhibit a power liftgate that opens and/or closes uncommanded while in PARK. This may be due to a concern with the hands-free liftgate actuation module ground. To correct the condition, follow the Service Procedure steps to relocate the ground.

Action: Follow the Service Procedure steps to correct the condition on vehicles that meet all of the following criteria:

- 2018-2019 Expedition
- Liftgate opens and/or closes uncommanded while in PARK

Parts

| Part Number | Description | Quantity |
|---------------|--|----------|
| CU5Z-14A411-A | Wire Kit | 1 |
| NAI837X | Coroplast Electrical Wire Harness Tape (Rotunda Technician Tool Program) | 1 |

Warranty Status: Eligible Under Provisions Of New Vehicle Limited Warranty Coverage Warranty/ESP coverage limits/policies/prior approvals are not altered by a TSB. Warranty/ESP coverage limits are determined by the identified causal part and verified using the OASIS part coverage tool.

Labor Times

| Description | Operation No. | Time |
|--|---------------|------|
| 2018-2019 Expedition: Relocate Ground Circuit GD347 Following The Service Procedure (Do Not Use With Any Other Labor Operations) | 192162A | 1.1 |

Repair/Claim Coding

| | |
|-----------------|--------|
| Causal Part: | 14B291 |
| Condition Code: | 42 |

Tool List

| Drive | Tool Name |
|-------|-------------------------|
| 1/4" | Power tool |
| 1/4" | Ratchet |
| 1/4" | Torque wrench |
| 1/4" | 10 mm socket |
| | Heat gun |
| | Soldering iron |
| | Side cut pliers |
| | Small plastic trim tool |

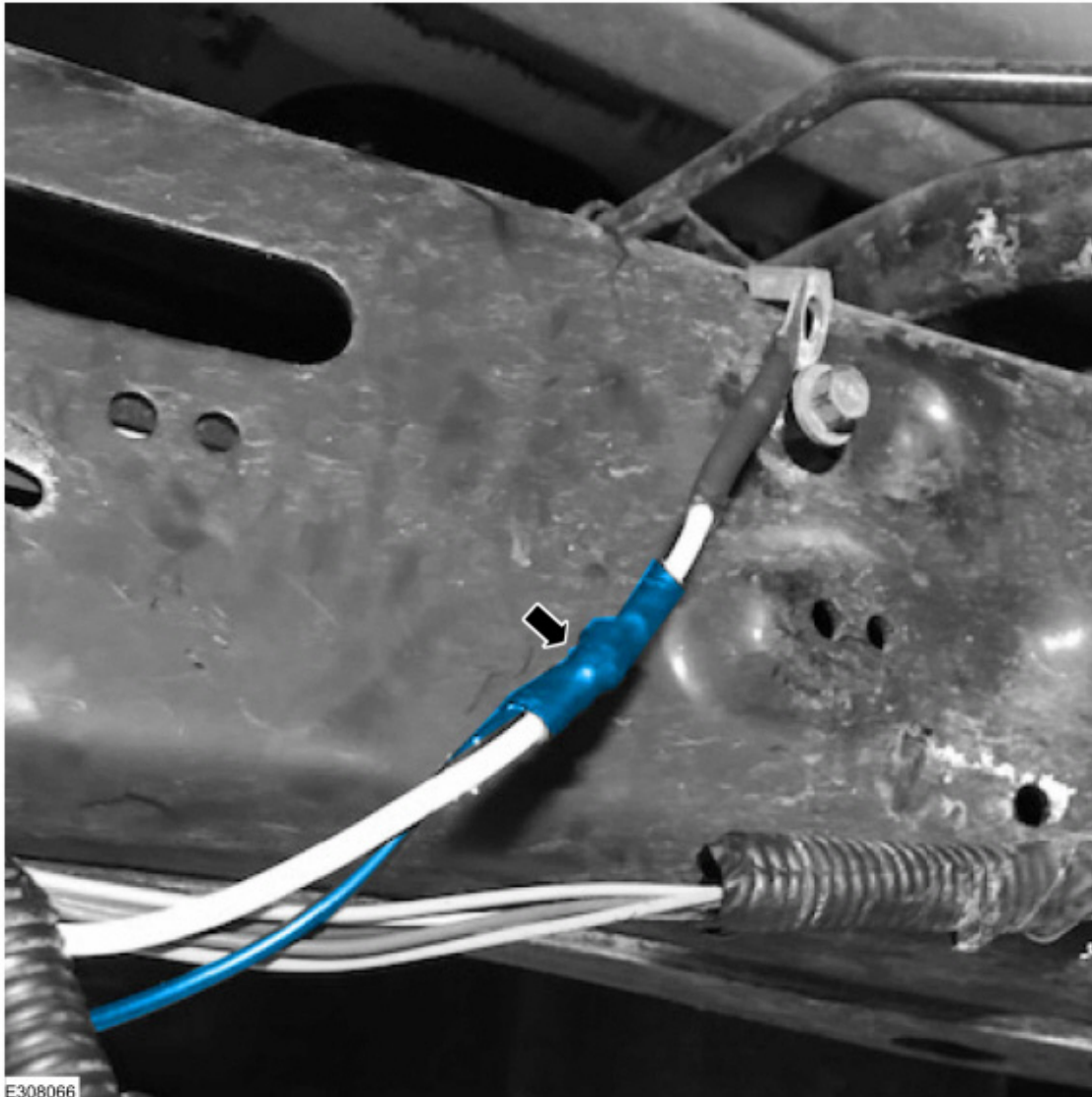
Service Procedure

1. Locate connector C494 at the rear of the vehicle.
2. Disconnect connector C494.
3. Using 21 American wire gauge (AWG) (0.77 mm) wire from the kit, solder and heat shrink the two wires together to create a wire approximately 650 mm (27 inches) in length.
4. On the female side of C494, locate pin 16 circuit GD347 (BK-VT) and cut the wire approximately 25 mm (1 inch) from the connector.
5. Splice, solder, and heat shrink the new ground wire into circuit GD347 (BK-VT) coming from C494. Cap circuit GD347 (BK-VT) leading into the harness with electrical tape.
6. Reconnect connector C494.
7. Remove the spare tire using the swivel wrench and access hole behind the third row seat.
8. Locate ground G405 on the inner frame rail and route the new ground wire over the frame to G405 location.
9. Remove ground G405 bolt.
10. Cut, splice, and solder the new ground wire into the G405 ground wire approximately 25 mm (1 inch) from the G405 ground attachment point. (Figures 1-2)

Figure 1



Figure 2



11. Reinstall ground G405 bolt. Tighten to 12 Nm (8 lb-ft).
12. Tape and secure the new ground wire.
13. Reinstall the spare tire using the swivel wrench and access hole behind the third row seat.

© 2019 Ford Motor Company
All rights reserved.

NOTE: The information in Technical Service Bulletins is intended for use by trained, professional technicians with the knowledge, tools, and equipment to do the job properly and safely. It informs these technicians of conditions that may occur on some vehicles, or provides information that could assist in proper vehicle service. The procedures should not be performed by "do-it-yourselfers". Do not assume that a condition described affects your car or truck. Contact a Ford or Lincoln dealership to determine whether the Bulletin applies to your vehicle. Warranty Policy and Extended Service Plan documentation determine Warranty and/or Extended Service Plan coverage unless stated otherwise in the TSB article. The information in this Technical Service Bulletin (TSB) was current at the time of printing. Ford Motor Company reserves the right to supersede this information with updates. The most recent information is available through Ford Motor Company's on-line technical resources.