

- ATTENTION:**
- GENERAL MANAGER
  - PARTS MANAGER
  - CLAIMS PERSONNEL
  - SERVICE MANAGER

IMPORTANT - All Service Personnel Should Read and Initial in the boxes provided, right.


© 2017 Subaru of America, Inc. All rights reserved.



QUALITY DRIVEN® SERVICE

## SERVICE BULLETIN

**APPLICABILITY:** 2013-2017MY BRZ, 6MT Models

**NUMBER:** 03-77-17

**SUBJECT:** “Rotational” Sound from Clutch Release Bearing

**DATE:** 01/03/17

### INTRODUCTION:

This bulletin announces a change to the internal lubricating grease used during assembly of the clutch release bearing for BRZ models. In cases where drivers have a tendency to rest their foot on the clutch pedal, doing so can cause the bearing to overheat. As a result, the grease inside the bearing can break down and over time, cause a “whirring” or rotational-type sound to develop. The new clutch release bearing contains a grease which is more resistant to heat while maintaining proper lubrication.

### PRODUCTION CHANGE INFORMATION:

The new clutch release bearing was incorporated into production starting with VIN **H\*600825**.

### PART INFORMATION:

- The new clutch release bearing part number is: **30502AA150**.
- The new bearing can be identified by a white paint dot on the attachment “ear” as shown in the illustration to the right.



### SERVICE PROCEDURE / INFORMATION:

When replacing the clutch release bearing, follow the procedure in the applicable Service Manual.

### IMPORTANT NOTES:

(for Anytime the Clutch Assembly and/or Release Bearing are serviced or replaced)

- Always inspect for any excessive or abnormal wear on the release fork pivot point, operating cylinder rod and release lever pivot points, and the pivot ball.
- Always use the proper grease (Nichimoly N-130, Conoco-Philips Multiplex Red #2 or Subaru p.n. 000041000) when lubricating the contact points of the release bearing and related components as specified in the Service Manual and shown below.

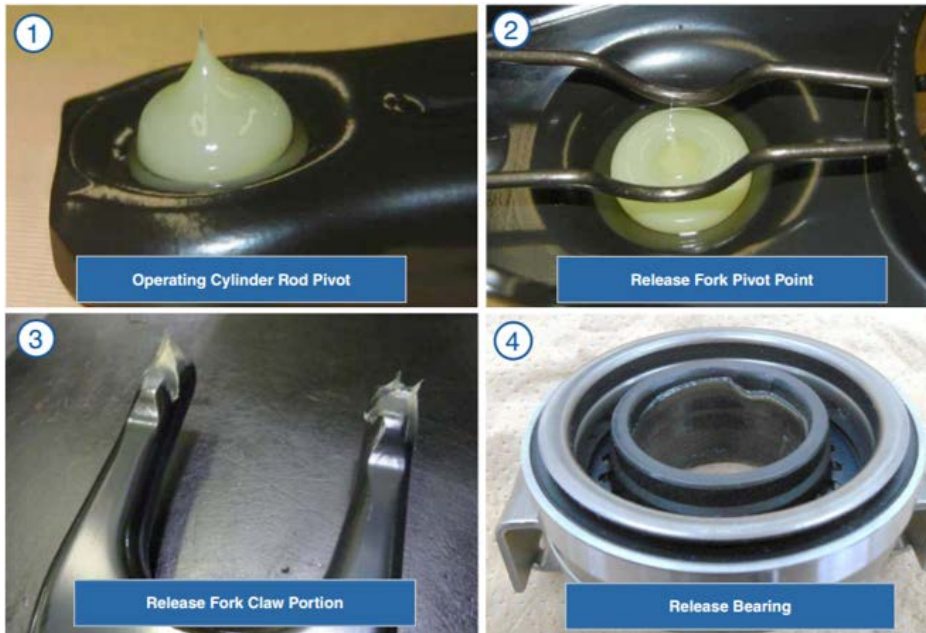
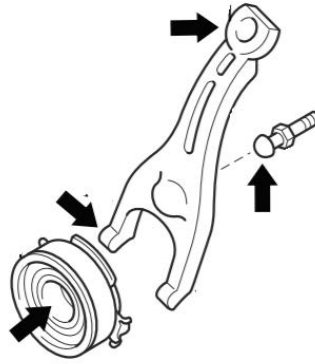
*Continued...*

**CAUTION: VEHICLE SERVICING PERFORMED BY UNTRAINED PERSONS COULD RESULT IN SERIOUS INJURY TO THOSE PERSONS OR TO OTHERS.**

Subaru Service Bulletins are intended for use by professional technicians ONLY. They are written to inform those technicians of conditions that may occur in some vehicles, or to provide information that could assist in the proper servicing of the vehicle. Properly trained technicians have the equipment, tools, safety instructions, and know-how to do the job correctly and safely. If a condition is described, DO NOT assume that this Service Bulletin applies to your vehicle, or that your vehicle will have that condition.

**SUBARU OF AMERICA, INC. IS ISO 14001 COMPLIANT**

ISO 14001 is the international standard for excellence in Environmental Management Systems. Please recycle or dispose of automotive products in a manner that is friendly to our environment and in accordance with all local, state and federal laws and regulations.



**WARRANTY / CLAIM INFORMATION:**

For vehicles within the Basic New Car Limited Warranty period or covered by an active Subaru Added Security Gold plan, this repair may be submitted using the following claim information:

Labor Description	Labor Operation #	Labor Time	Fail Code
6MT RWD MANUAL TRANSMISSION R&R	B329-101	2.6	JAD-25
RELEASE FORK, BEARING / SHAFT R&R	C325-121	0.2	

**IMPORTANT REMINDERS:**

- SOA strongly discourages the printing and/or local storage of service information as previously released information and electronic publications may be updated at any time.
- Always check for any open recalls or campaigns anytime a vehicle is in for servicing.
- Always refer to STIS for the latest service information before performing any repairs.